



PE Leader of the Year



Niche UK PE House of the Year



Best UK Commercially Motivated PE



Industry 4.0 Portfolio



DraxFuture40 Investor

Brookstreet 2.0

Governance, Boards and ESG Principles

Webcast 5: June 18, 2025

Series: *Connecting the Dots of Today | Building the Future of Tomorrow*
#ConnectingTheDots

In Collaboration with PRAXI Network (FORTH)



About Us

Brookstreet 2.0

Brookstreet Equity Partners LLP (“Brookstreet”) is an award-winning, commercially-focused **Growth Capital** investor.

Our **2.0** thesis is based on investing in **Artificial Intelligence** innovations for **Digital Transformation, Green Transition, and Longevity Scale Ups**.

We are headquartered in London’s Mayfair and operate globally with partners, assets, and investors in the **USA, Europe, Middle East, and Asia**.



Digital Transformation

- AI & IoT Transformative Integrations
- Autonomy, Robo, Drones, Security
- Industrial Automation
- Business Optimization
- Defence-Tech Solutions (Dual Use)



Green Transition

- Geo-Secure Energy
- Production & Storage
- Sustainability Innovations
- Climate Solutions
- Circular Economy



Longevity

- HealthSpan (Living Well)
- LifeSpan (Living Long)
- Wellness & Performance
- Age-Tech
- Med-Tech



Commercial Scale Ups

- Growth Capital
- Pre/Post Series A & B
- Hyper Growth (>2x a year)
- Sustainable Growth (>35% YoY, EBITDA+)
- Bridge to M&A (LOI Required)

About Us

Brookstreet was one of the first growth capital investment managers to integrate **Artificial Intelligence (AI), Commercial Due Diligence, Talent DNA and ESG Rankings into its processes**. Brookstreet unites a distinguished team of Ivy League and Oxbridge PEVC fund managers, McKinsey consultants, M&A bankers, Founders, and CEOs, on an **AI and KPI enhanced institutional investment platform**, offering “Precision in Asymmetry”.

Our Difference

- Global Deal Flow (450+ Connections)
- Thematic Investments
- Talent (Ivy League, Oxbridge, London, EU)
- Global Institutional Co-Investors
- Expert Network (130+ Advisors)
- AI/Commercial/Managerial Due Diligence
- Brookstreet AI Intelligence & KPI Analytics
- Dual Returns Strategy
- Trusted Administrator (\$2.5TN AUM)
- Governance & Sustainability
- United Nations PRI Signatory (ESG)

Our Journey

Pitch Competition

Applications are open [[Link](#)]

© Slides

BROOKSTREET
EQUITY PARTNERS LLP

praxi»
help-forward network

Webcast 1: Demystifying Financial Sponsors

January 15, 2025



Webcast 2: Mastering the Pitch

February 12, 2025



Webcast 3: Investor Termsheets Revealed

March 12, 2025



Webcast 4: Value & Valuation

May 29, 2025



Webcast 5: Governance, Boards and ESG

June 18, 2025



Live Competition: From Theory to Practice

July 8, 2025



Draft, Private and Confidential

Agenda

Section

Governance & Company Structure

```
graph TD; A[Governance & Company Structure] --> B[ESG & Sustainability in Boards]; B --> C[Regulatory and Policy Tailwinds within the Sustainability Scope];
```

ESG & Sustainability in Boards

Regulatory and Policy Tailwinds within the Sustainability Scope

Governance, Boards and ESG Principles

Governance & Company Structure (1/2)

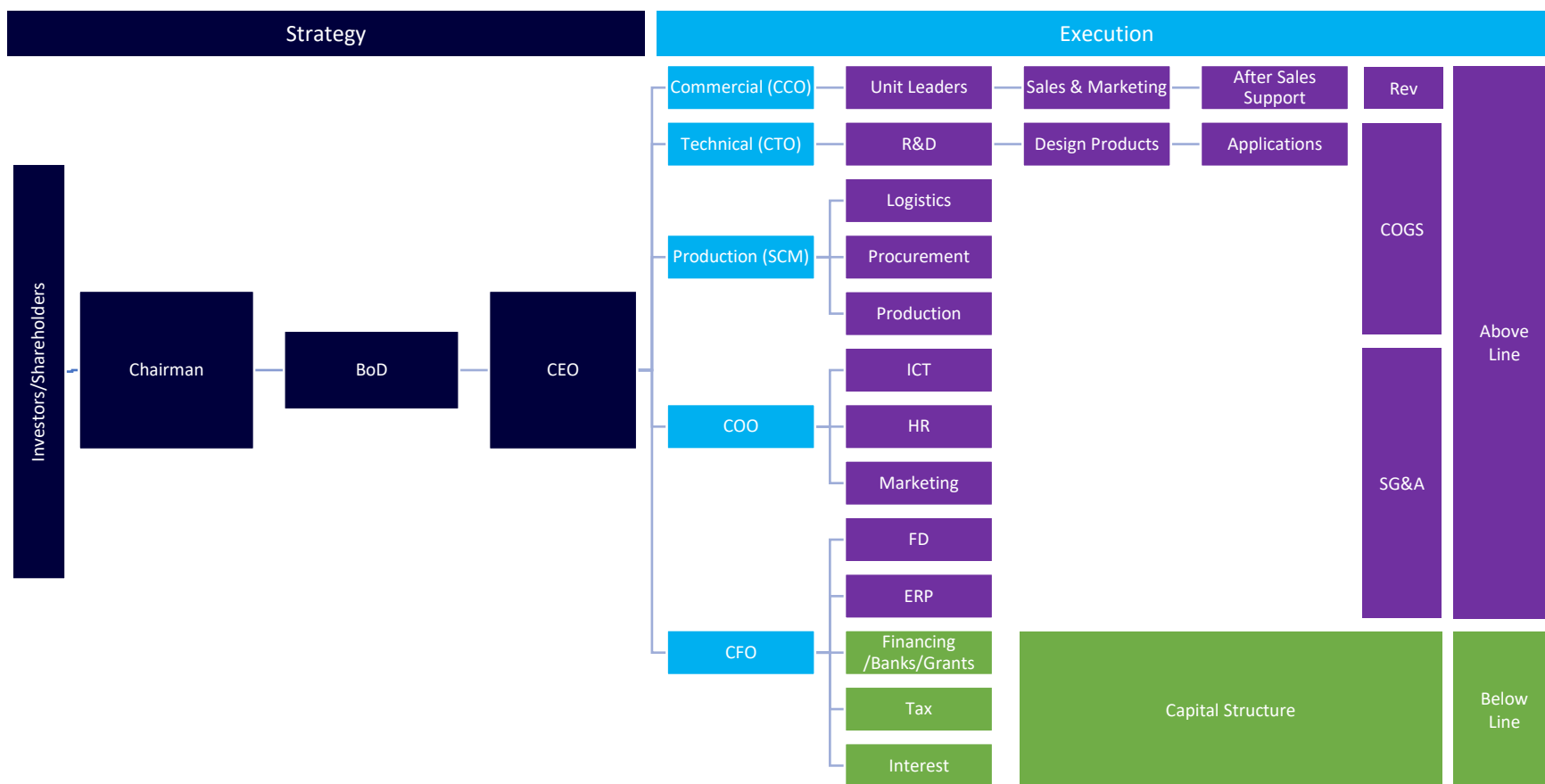
Governance can be defined as the principles, practices and processes by which a company is managed and monitored



Governance, Boards and ESG Principles

Governance & Company Structure (2/2)

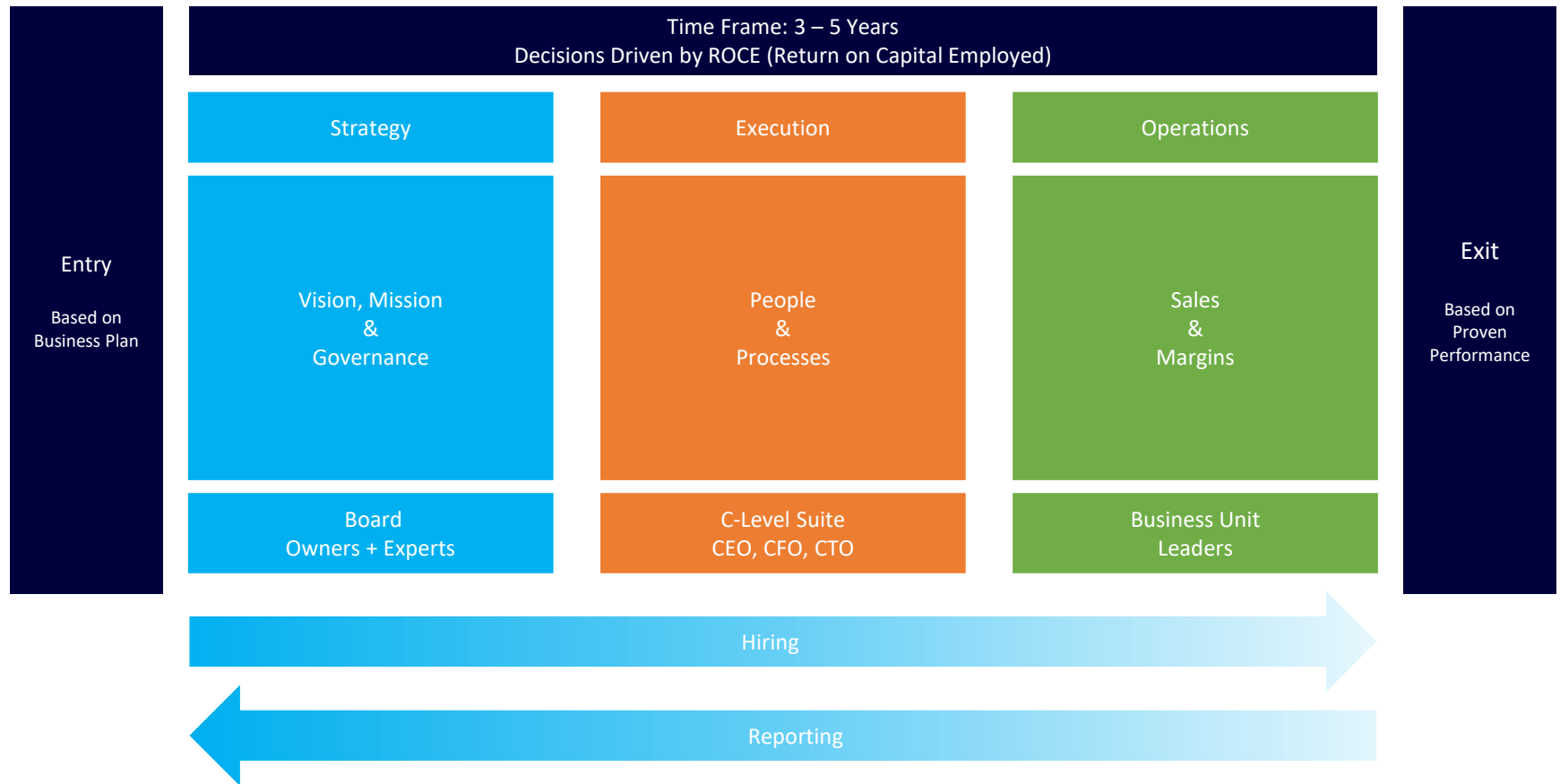
The Agency Dilemma, known as the principal-agent problem



Governance, Boards and ESG Principles

From Entry to Exit

Good financial performance is strongly and positively correlated with good governance



Governance, Boards and ESG Principles

Board Packs

Company Limited
Board Meeting
[insert date; time, location]

EXAMPLE



1. Chair's Opening remarks
2. Minutes, matters arising and b/f actions
3. Review of Company Health (Financial, Operational)
4. Business Update
5. Market News
6. C-Team Report (CEO, CFO, COO, CMO)
7. Business Units (as stipulated)
8. Strategic Discussions
9. Compliance matters
10. AOB
11. Date & time of next meeting

Governance, Boards and ESG Principles

Best in Class Industry Practices from the BVCA

100 Day Plan

BVCA

 [Return](#) ABOUT US / OUR INDUSTRY



100 Day Plan

Experienced: 18+ months

Designed for experienced deal makers looking to boost value creation, this one day course will help delegates discover how to capitalise on those crucial first 100 days after acquisition when investee companies are most receptive to change.

KPI and Board Reporting

BVCA

 [Return](#) ABOUT US / OUR INDUSTRY



KPI & Board Reporting

Experienced: 18+ months

Introducing a brand new course to boost value creation within your portfolio. Understand how data and KPIs are fundamental to enhanced value creation and discover best practice and core components of an informative board pack.

KPI Dashboards

BVCA



- Fund managers train in BVCA value creation.

- The attest training by BVCA (and we did it in 2021) is the KPI Board Reporting.

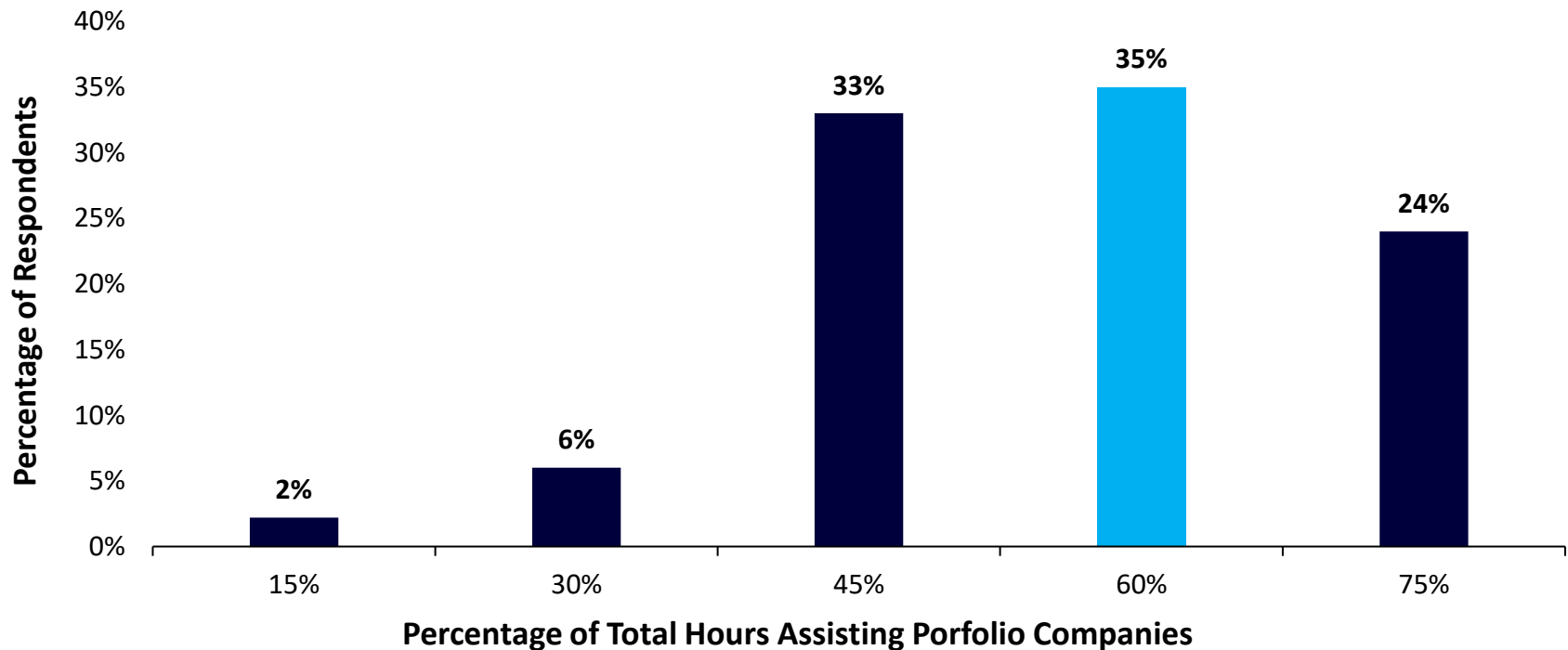
- Example from a KPI Dashboard using traffic light system (As recommended by BVCA).

Governance, Boards and ESG Principles

Time Spent on Boards

Time Spend by Venture Capitalists

Lerner, Chapter 6



Source: Adapted from Gorman and Sahlman, "What do Venture Capitalist Do?" 236

Governance, Boards and ESG Principles

Board Affiliation

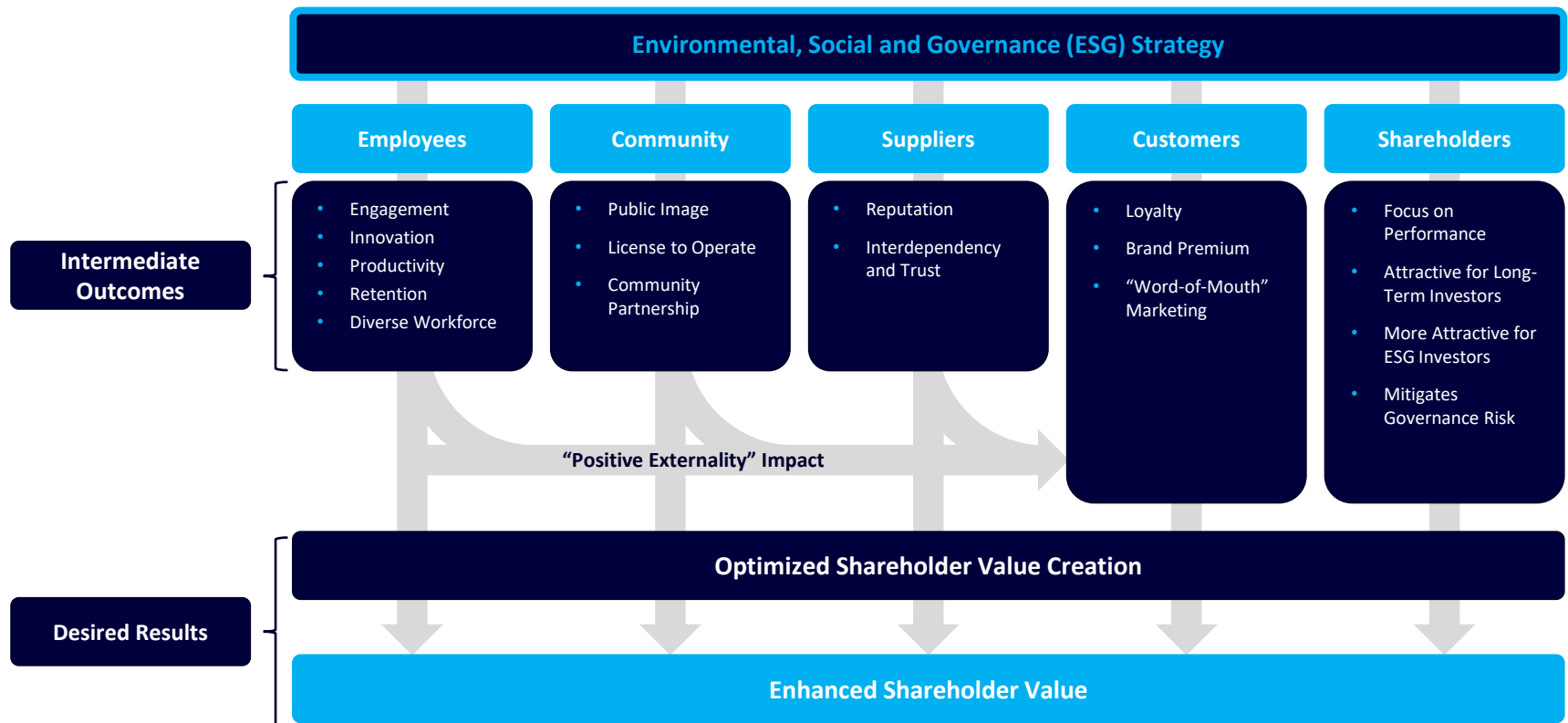
The Professional Affiliation of Board Members at the Last Financing Round

Lerner

Outside Directors	Percent of Total
Venture Capitalist	36.2
Corporate Partner	6.4
Other Investor	3.1
Executive in Other Healthcare/Biotech Firm	3.5
Retired Healthcare/High-Tech Executive	3.6
Academic without Firm Affiliation	0.9
Lawyer, Consultant, or Investment Banker without Firm Affiliation	1.4
Other/Unidentified	5.1
Inside Directors	Percent of Total
Senior Manager	20.3
Junior Manager	7.1
Quasi-Inside Directors	Percent of Total
Academic with Firm Affiliation	8.9
Lawyer with Firm Affiliation	0.5
Investment/Commercial Banker with Firm Affiliation	1.0
Former Manager of Firm	0.6
Relative/Other	1.3

Governance, Boards and ESG Principles

Stakeholder Engagement and Brand Strength



Governance, Boards and ESG Principles

Risk Mitigation

How ESG started



Volkswagen says diesel scandal has cost it 31.3 billion euros

Poor governance resulted in the recall of millions of Volkswagen cars after the company admitted to falsifying emissions tests. This has cost VW \$35 billion in fines, penalties, financial settlements and buyback costs



The nation's largest utility agrees to pay more than \$55 million for two wildfires

Pacific Gas & Electric recently agreed to pay more than \$55 million to avoid criminal prosecution for two major wildfires started by aging Northern California power lines belonging to the company



INFORM Provide general information about the company and its operations, eg. products, structure, geographical footprint, etc.

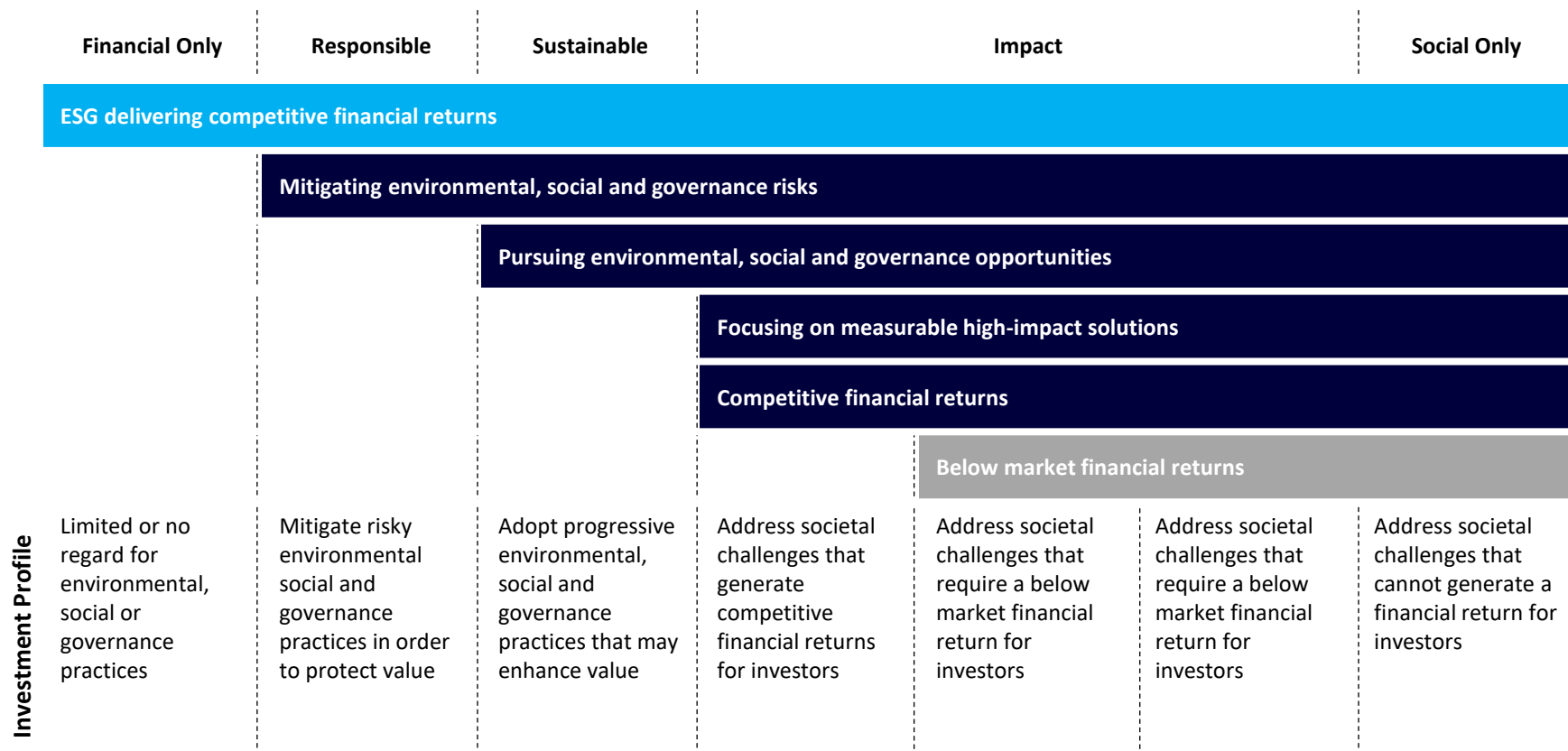
MANAGE Provide qualitative data to demonstrate the management response to ESG impact, risks and opportunities.

MEASURE Provide qualitative data on metrics and targets either defined by the entity as part of the strategy and risk management, or by legislation (i.e., EU taxonomy of SFDR).

ACT Create processes and solutions that reduce exposure to risks associated with environmental liabilities, social controversies or governance failures

Governance, Boards and ESG Principles

Enhanced Financial Performance



Governance, Boards and ESG Principles

Brookstreet's ESG Journey



- **Principle 1**
We will incorporate ESG issues into investment analysis and decision-making processes.
- **Principle 2**
We will be active owners and incorporate ESG issues into our ownership policies and practices.
- **Principle 3**
We will seek appropriate disclosure on ESG issues by the entities in which we invest.
- **Principle 4**
We will promote acceptance and implementation of the Principles within the investment industry.
- **Principle 5**
We will work together to enhance our effectiveness in implementing the Principles.
- **Principle 6**
We will each report on our activities and progress towards implementing the Principles.

Governance, Boards and ESG Principles

The ESG Roadmap

The first early-stage VC emerging manager, to our knowledge, with a dedicated Sustainability leader.



ESG INTEGRATION ACROSS ASSET MANAGEMENT

ESG ROADMAP

DEFINE DETERMINE ESTABLISH ASSESS SET EVALUATE ENGAGE



Define RI and which ESG criteria are most important to them



Determine the role ESG should play



Establish the scope of ESG implementation



Assess the feasibility of different RI investments



Set appropriate market and nonmarket benchmarks



Evaluate performance



Engage in education and outreach with the clients' internal and external stakeholders



Governance, Boards and ESG Principles

Our ESG KPI Asset Scorecard

BROOKSTREET EQUITY PARTNERS LLP						
Brookstreet Equity Partners LLP						
ESG KPI Asset Scorecard						
Category	#	Criteria	Guideline Source	Unit	2023 Data	Points to Collect
Overall Outlook	1	Company vision	Test	Test	Test	Test
	2	Company mission	Test	Test	Test	Test
	3	Company values	Test	Test	Test	Test
	4	Company strategy	Test	Test	Test	Test
	5	Company goals	Test	Test	Test	Test
	6	Company risks	Test	Test	Test	Test
	7	Company opportunities	Test	Test	Test	Test
	8	Company challenges	Test	Test	Test	Test
	9	Company strengths	Test	Test	Test	Test
	10	Company weaknesses	Test	Test	Test	Test
Financials	11	Revenue growth	Test	Test	Test	Test
	12	Profitability	Test	Test	Test	Test
	13	Balance sheet	Test	Test	Test	Test
	14	Capital structure	Test	Test	Test	Test
	15	Debt to equity ratio	Test	Test	Test	Test
	16	Return on equity	Test	Test	Test	Test
	17	Return on assets	Test	Test	Test	Test
	18	Return on capital employed	Test	Test	Test	Test
	19	Operating leverage	Test	Test	Test	Test
	20	Financial flexibility	Test	Test	Test	Test
Governance	21	Board composition	Test	Test	Test	Test
	22	Board independence	Test	Test	Test	Test
	23	Board diversity	Test	Test	Test	Test
	24	Board effectiveness	Test	Test	Test	Test
	25	Board oversight	Test	Test	Test	Test
	26	Board engagement	Test	Test	Test	Test
	27	Board evaluation	Test	Test	Test	Test
	28	Board refreshment	Test	Test	Test	Test
	29	Board succession planning	Test	Test	Test	Test
	30	Board training	Test	Test	Test	Test
Environment	31	Climate change	Test	Test	Test	Test
	32	Greenhouse gas emissions	Test	Test	Test	Test
	33	Carbon footprint	Test	Test	Test	Test
	34	Energy consumption	Test	Test	Test	Test
	35	Water usage	Test	Test	Test	Test
	36	Waste management	Test	Test	Test	Test
	37	Pollution	Test	Test	Test	Test
	38	Environmental impact	Test	Test	Test	Test
	39	Environmental risk	Test	Test	Test	Test
	40	Environmental opportunity	Test	Test	Test	Test
Social	41	Human rights	Test	Test	Test	Test
	42	Labour practices	Test	Test	Test	Test
	43	Employee engagement	Test	Test	Test	Test
	44	Employee turnover	Test	Test	Test	Test
	45	Employee safety	Test	Test	Test	Test
	46	Employee benefits	Test	Test	Test	Test
	47	Employee development	Test	Test	Test	Test
	48	Employee diversity	Test	Test	Test	Test
	49	Employee inclusion	Test	Test	Test	Test
	50	Employee well-being	Test	Test	Test	Test
Community	51	Community engagement	Test	Test	Test	Test
	52	Community investment	Test	Test	Test	Test
	53	Community development	Test	Test	Test	Test
	54	Community support	Test	Test	Test	Test
	55	Community impact	Test	Test	Test	Test
	56	Community risk	Test	Test	Test	Test
	57	Community opportunity	Test	Test	Test	Test
	58	Community resilience	Test	Test	Test	Test
	59	Community innovation	Test	Test	Test	Test
	60	Community leadership	Test	Test	Test	Test
ESG Reporting	61	ESG reporting	Test	Test	Test	Test
	62	ESG disclosure	Test	Test	Test	Test
	63	ESG metrics	Test	Test	Test	Test
	64	ESG targets	Test	Test	Test	Test
	65	ESG verification	Test	Test	Test	Test
	66	ESG assurance	Test	Test	Test	Test
	67	ESG transparency	Test	Test	Test	Test
	68	ESG accountability	Test	Test	Test	Test
	69	ESG integrity	Test	Test	Test	Test
	70	ESG credibility	Test	Test	Test	Test

The Asset KPIs sheet is the main sheet that will need to be filled by the asset

The columns included are:

- Categories
- Criteria
- Guideline Source
- Unit
- Answers *(to be filled by the asset)*
- Points *(Traffic light ranking)*
- Target *(to be filled by the asset)*
- Actions *(to be filled by the asset)*

All the criteria are categorized as following:

- Overall Outlook
- Financials
- Governance (General, Legal / Regulatory, DEI)
- Environment (General, GHG, Net Zero Policy, Water, Hazardous Waste)
- Social (General, New Hires, Employee Engagement, Work Safety)
- ESG Reporting / Certifications

Welcome

Asset KPIs

Appendix A Sector Materiality

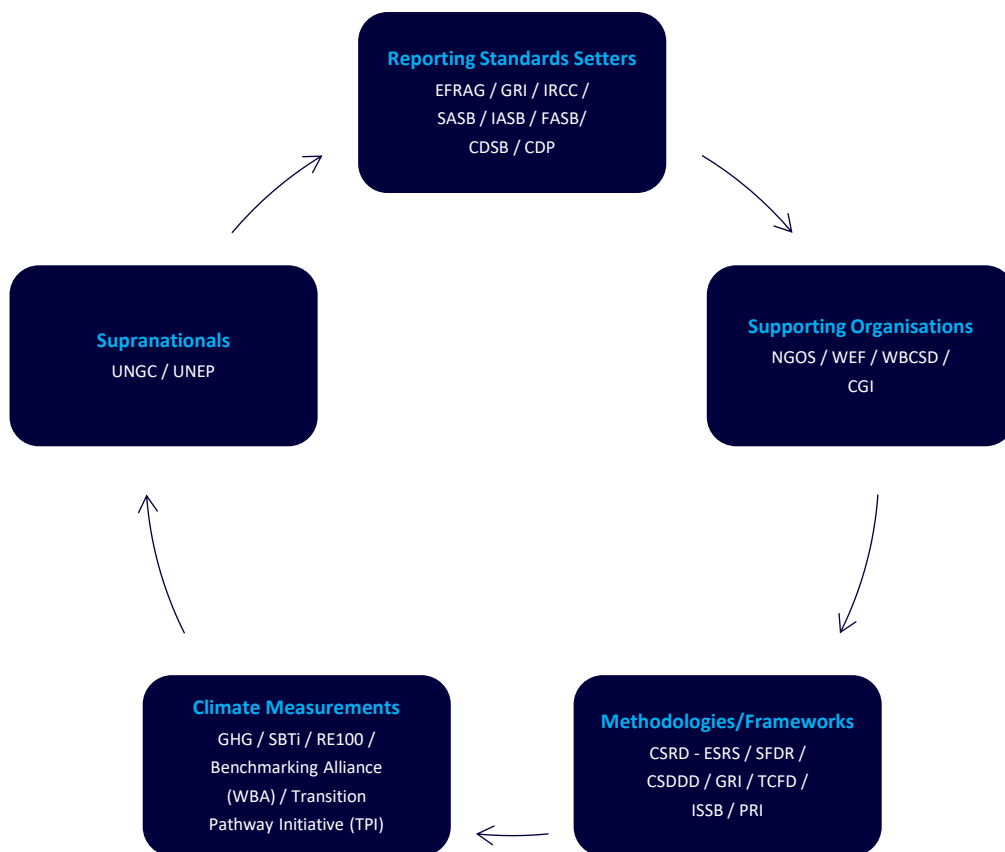
Appendix B All Sectors

Appendix C Glossary

Governance, Boards and ESG Principles

Regulation Overview

ESG: From “nice to have” to “must have”



Key Vocabulary:

- CGI: Climate Governance Initiative
- CDP: Carbon Disclosure Project
- CRD: Corporate Reporting Dialogue
- CSDDD: Corporate Sustainability Due Diligence Directive
- CSRD – ESRS: Set by EFRAG (sector agnostic. Details in attachments)
- GhG: Greenhouse Gas Emissions
- GRI: Voluntary Global framework (see attachments)
- ISSB: IFRS Sustainability Standards (S1 / S2)
- SBTi: Science Based Targets initiative (Details in attachment)
- SFDR: Sustainable Finance Disclosure Regulation (see attachment)
- TCFD: Global framework set by CDSB (Climate Disclosure Standards Board) applied mainly in the UK and for Financial Institutions (sector specific. Details see attachments)
- PRI: United Nations Principles for Responsible Investments
- UNGC: United Nations Global Compact
- WBCSD: World Business Council for Sustainable Development

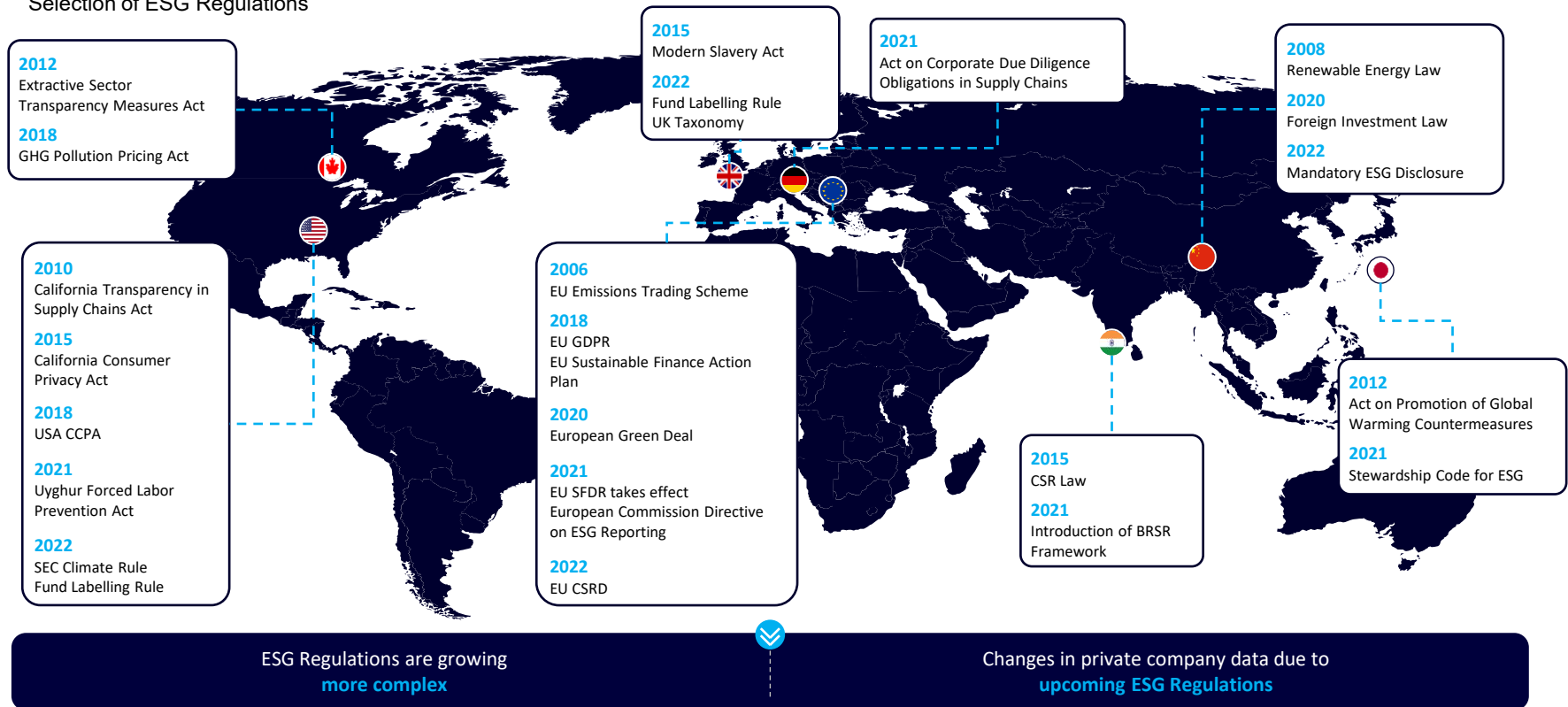
Governance, Boards and ESG Principles

Regulatory and Policy Tailwinds

Omnibus has led to a slowdown in the regulatory landscape

ESG Related Regulations are Increasing Globally

Selection of ESG Regulations



Governance, Boards and ESG Principles

Yodiwo's EnGage Solution (1/2)

Comply with ESG Data Management & Reporting

Centralize, automate, and future-proof your ESG strategy



Centralized ESG Data Hub

End spreadsheet chaos. Eliminate data silos, reduce manual effort, and minimize reporting errors at the source.

- ✓ Fully integratable with your existing ecosystem: connect seamlessly to PDFs, IoT sensors, smart meters, and third-party systems.
- ✓ Collect, monitor, and manage all ESG items across any organizational level — from business units to facilities — with just a click.



Personalized & Multi-Level Dashboards

Bring clarity and structure to your ESG operations. Save time, improve accountability, and make data instantly actionable.

- ✓ Visualize KPIs, metrics, narratives, CAPAs, and processes tailored to your role, giving you real-time, full visibility over duties, communications, progress, & notifications.
- ✓ Get a digitalized Double Materiality view and connect your topics with the progress of specific metrics, narratives, IROs, and KPIs.



Integrated Task & CAPA Management System

assign and track CAPAs, link actions to financial-impact KPIs, and monitor resolution of material ESG risks.

- ✓ Assign tasks, track progress, and collaborate with built-in communication tools and ticketing systems.
- ✓ Use the integrated CAPA system to create, assign, and monitor the progress of your sustainability activities — all linked to specific metrics, narratives, IROs, and KPIs.

AI-Powered ESG Features-Drive Impact



Custom KPIs & Forecast



Advanced Emissions Reporting



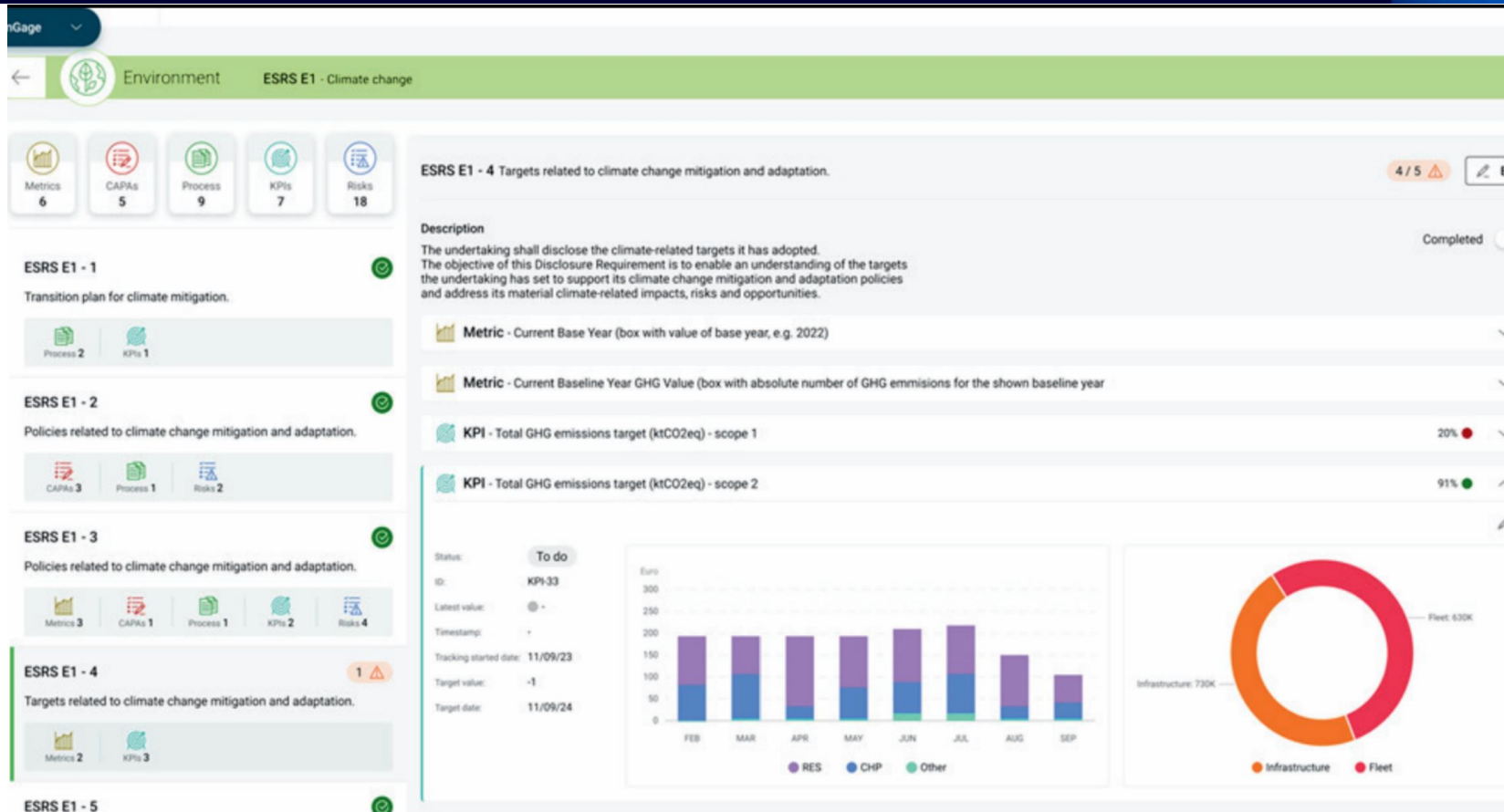
AI-Generated Reports



Governance, Boards and ESG Principles

Yodiwo's EnGage Solution (2/2)

Comply with ESG Data Management & Reporting



Disclaimer

The material contained herein is draft and confidential and proprietary to Brookstreet Equity Partners LLP (“Brookstreet”) and, accordingly, this material is not to be reproduced in whole or in part or used for any purpose except as authorized by Brookstreet and is to be treated as strictly confidential and not disclosed directly or indirectly to any other person, firm or entity. Please note the material and its contents have not been verified by Brookstreet and no express or implied warranty as to the accuracy or completeness of such information is made by Brookstreet or any other party nor does Brookstreet nor any other person, to the maximum extent permitted by law, neither accept any responsibility or liability whatsoever for any direct or indirect loss howsoever arising from any use of this document or its draft contents or otherwise arising in connection therewith. Nothing contained herein is, or shall be, relied upon as a promise or representation as to the future. The contents of this document are subject to corrections or change at any time and do not constitute marketing or promotion material. Nothing in this document should be treated as advice relating to legal, taxation or investment matters and you are advised to consult your own professional advisors concerning any potential acquisition, holding or disposal of any Fund interests or other investments.

This information does not constitute or form any part of, and should not be construed as, an offer, an invitation, an advertisement or any other solicitation, an advice or recommendation to purchase or subscribe to sell or the solicitation of an offer to buy any securities in any jurisdiction. If the distribution of this document in or to persons in a jurisdiction is restricted by law, anyone in possession of this document should inform himself/herself about, and observe any such restrictions; any offering will only be made by means of a private placement memorandum or other appropriate materials that will contain detailed information about the securities to be offered, the issuer and management and is subject to the risk factors, conflicts of interest, securities law restrictions and other qualifications and limitations described therein; no sales will be made, and no commitments to purchase securities will be accepted, and no money is being solicited or will be accepted, until such materials are made available to investors; and any indications of interest from prospective investors in response to this presentation involves no obligation or commitment of any kind. Front page image is digitally enhanced. No reliance may be placed for any purpose whatsoever on the draft information, statements or opinions contained in this document, and no liability is accepted for any such draft information, statements or opinions. This document is for discussion purposes only. It is not an information placement memorandum and does not constitute marketing activity. No person falling outside the programme is allowed to view this presentation or treat this document as constituting a promotion to him or her.

© Brookstreet Equity Partners LLP 2025

www.brookstretequity.com

Brookstreet Equity Partners LLP UK

Member of the British Private Equity & Venture Capital Association (BVCA)

Registered and Regulated by the UK's Financial Conduct Authority (FCA)

United-Nations Principles for Responsible Investment Signatory (PRI)

No part of this presentation should be copied or distributed without prior written permission by Brookstreet Equity Partners LLP.

Brookstreet Equity Partners LLP UK is a limited liability partnership, registered in England and Wales. Registered Number OC413126.

Registered Office: 42 Berkeley Square, Mayfair, London W1J 5AW, England.

All other Brookstreet locations, including worldwide offices, or any affiliates, constitute representation offices.

Contact

Requests for further information can be addressed to:

LONDON
ATHENS
PARIS
NEW YORK

Brookstreet Equity Partners LLP
Registered Headquarters
42 Berkeley Square
Mayfair
London W1J 5AW
England
Email: info@brookstreetequity.com



© Brookstreet Equity Partners LLP 2025
www.brookstreetequity.com

Brookstreet Equity Partners LLP UK
Member of the British Private Equity & Venture Capital Association (BVCA)
Registered and Regulated by the UK's Financial Conduct Authority (FCA)
United-Nations Principles for Responsible Investment Signatory (PRI)

No part of this presentation should be copied or distributed without prior written permission by Brookstreet Equity Partners LLP.

Brookstreet Equity Partners LLP UK is a limited liability partnership, registered in England and Wales. Registered Number OC413126.
Registered Office: 42 Berkeley Square, Mayfair, London W1J 5AW, England.
All other Brookstreet locations, including worldwide offices, or any affiliates, constitute representation offices.