

Research Infrastructures Greek Participation



Spiros H. Anastasiadis

University of Crete
Department of Chemistry
Heraklion Crete, Greece

Foundation for Research and Technology – Hellas
Institute of Electronic Structure and Laser
Heraklion Crete, Greece



spiros@iesl.forth.gr

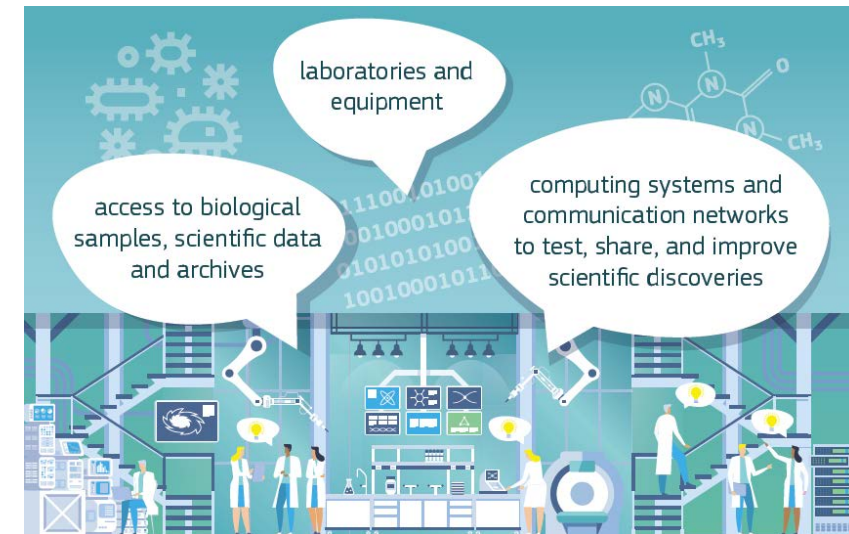
Acknowledgments

- Despina Magiri-Skouloudi, PRAXI Network, NCP RIs



What are Research Infrastructures?

- Research Infrastructures are facilities that provide **resources** and **services** for **research communities** to conduct research and foster innovation.
- They can be used beyond research, e.g., for education or public services and they may be single-sited, distributed, or virtual.
- They include
 - major scientific equipment or sets of instruments
 - collections, archives or scientific data
 - computing systems and communication networks
 - any other research and innovation infrastructure of a unique nature, which is open to external users



Research Infrastructures - Objectives

- To **reduce** fragmentation of the R&I ecosystem and **avoid duplication** of effort
- To **better coordinate** the development and use of the European Research Infrastructures landscape, maintaining **global leadership**
- To **join forces internationally** to
 - construct and run large, complex or expensive infrastructures
 - respond to global challenges and/or
 - foster combining skills, data and efforts of the world's best scientists
- To **establish strategies** for **new** pan-European, well-established Intergovernmental or National Research Infrastructures
- To enable an operational, open and **FAIR EOSC ecosystem**
- To **foster the innovation** potential of RIs by making **industry more aware** of opportunities offered to improve their products and by the co-development of advanced technologies
- To use Research Infrastructures for **science diplomacy** - using science collaboration to address common problems and build partnerships internationally (e.g., SESAME in Jordan and EU-CELACEN in Latin America)



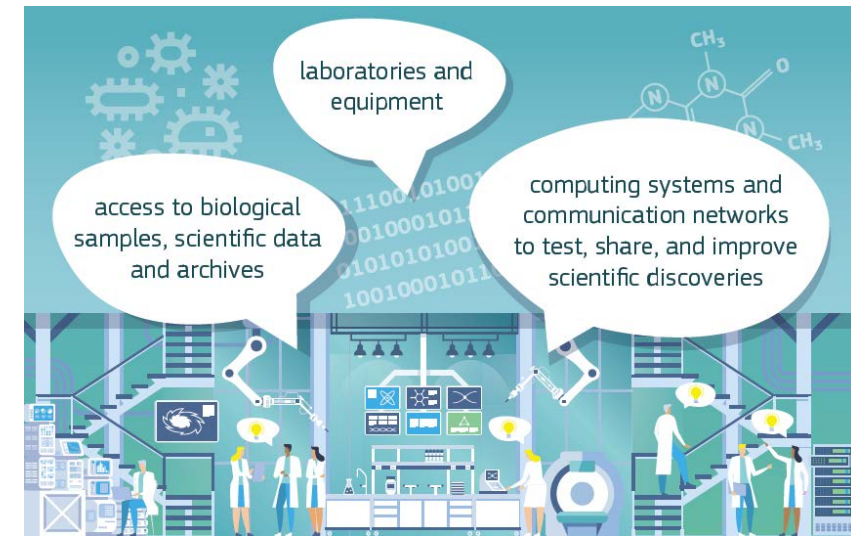
Research Infrastructures - Initiatives

- **European Strategy Forum on Research Infrastructures (ESFRI)**
 - The ESFRI develops a strategic roadmap identifying investment priorities in European Research Infrastructures for the next 10-20 years.
- **European Research Infrastructure Consortium (ERIC)**
 - A specific legal form that facilitates the establishment and operation of Research Infrastructures.
- **Group of Senior Officials (GSO)**
 - Global group of experts that takes stock of the existing situation of global Research Infrastructures and explores new collaboration opportunities.
- **European Open Science Cloud (EOSC)**
 - Cloud database for research in Europe.
- **EIROforum**
 - Collaboration agreement to combine resources, facilities and expertise of its Member Organizations to support European science
- **Association of European-Level Research Infrastructures Facilities (ERF-AISBL)**
 - A not-for-profit association promoting the development and visibility of European infrastructures providing access to external users.



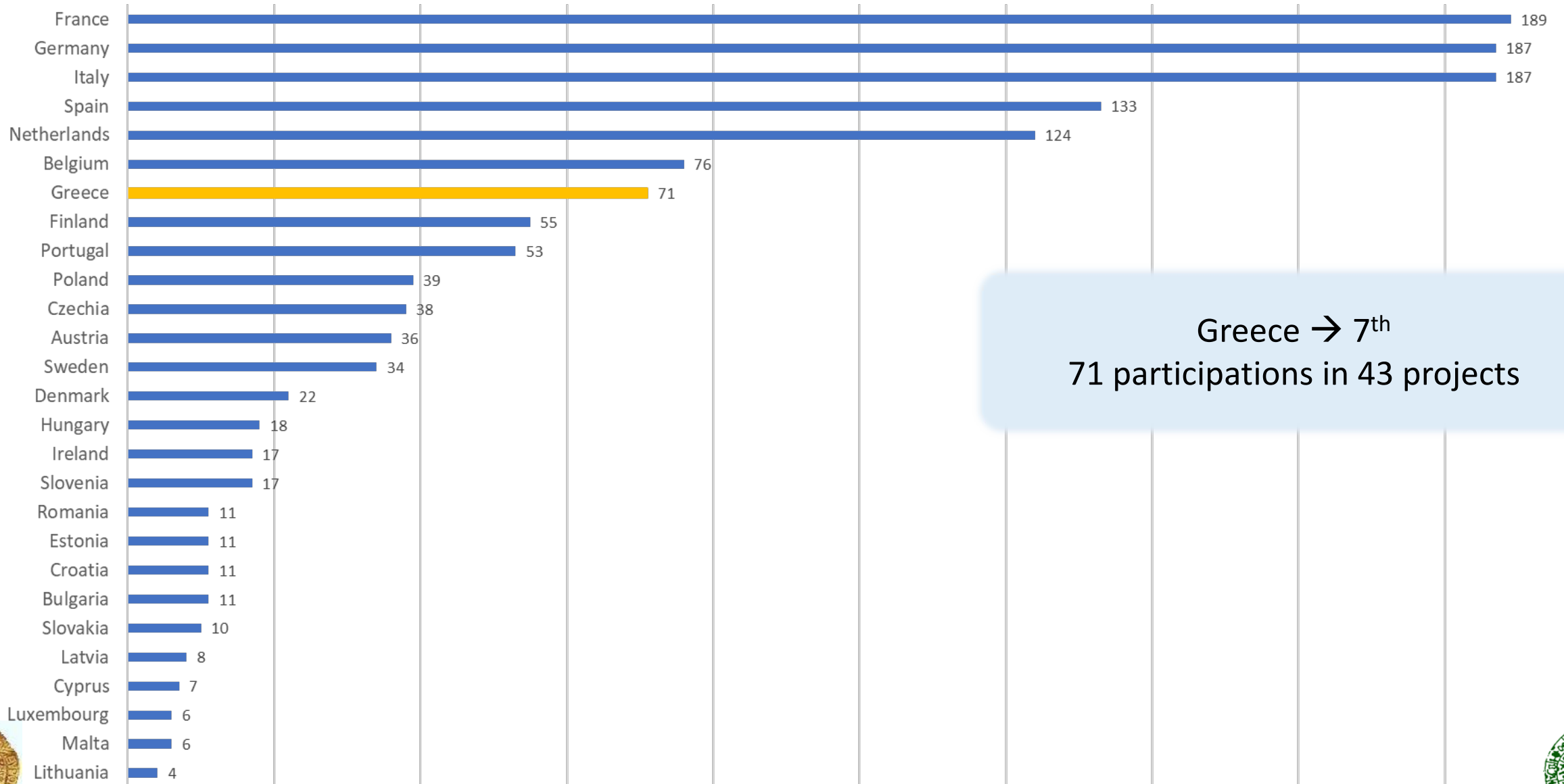
“Destinations”

- Developing, Consolidating and Optimising the European Research Infrastructures Landscape, Maintaining Global Leadership (**INFRADEV**)
- Enabling an Operational, Open and Fair EOSC Ecosystem (**INFRAEOSC**)
- Research Infrastructure Services to Support Health Research, Accelerate the Green and Digital Transformation, and Advance Frontier Knowledge (**INFRASERV**)
- Next Generation of Scientific Instrumentation, Tools and Methods and Advanced Digital Solutions (**INFRATECH**)
- Network Connectivity in Research and Education - Enabling Collaboration Without Boundaries (**INFRA-NET**)
- COVID-19 Emergency Calls (**INFRA-2021-EMERGENCY**)



Greek Participation in Research Infrastructure – projects

Κατάταξη της Ελλάδας στην ΕΕ 27 σε σχέση με τις συμμετοχές σε έργα

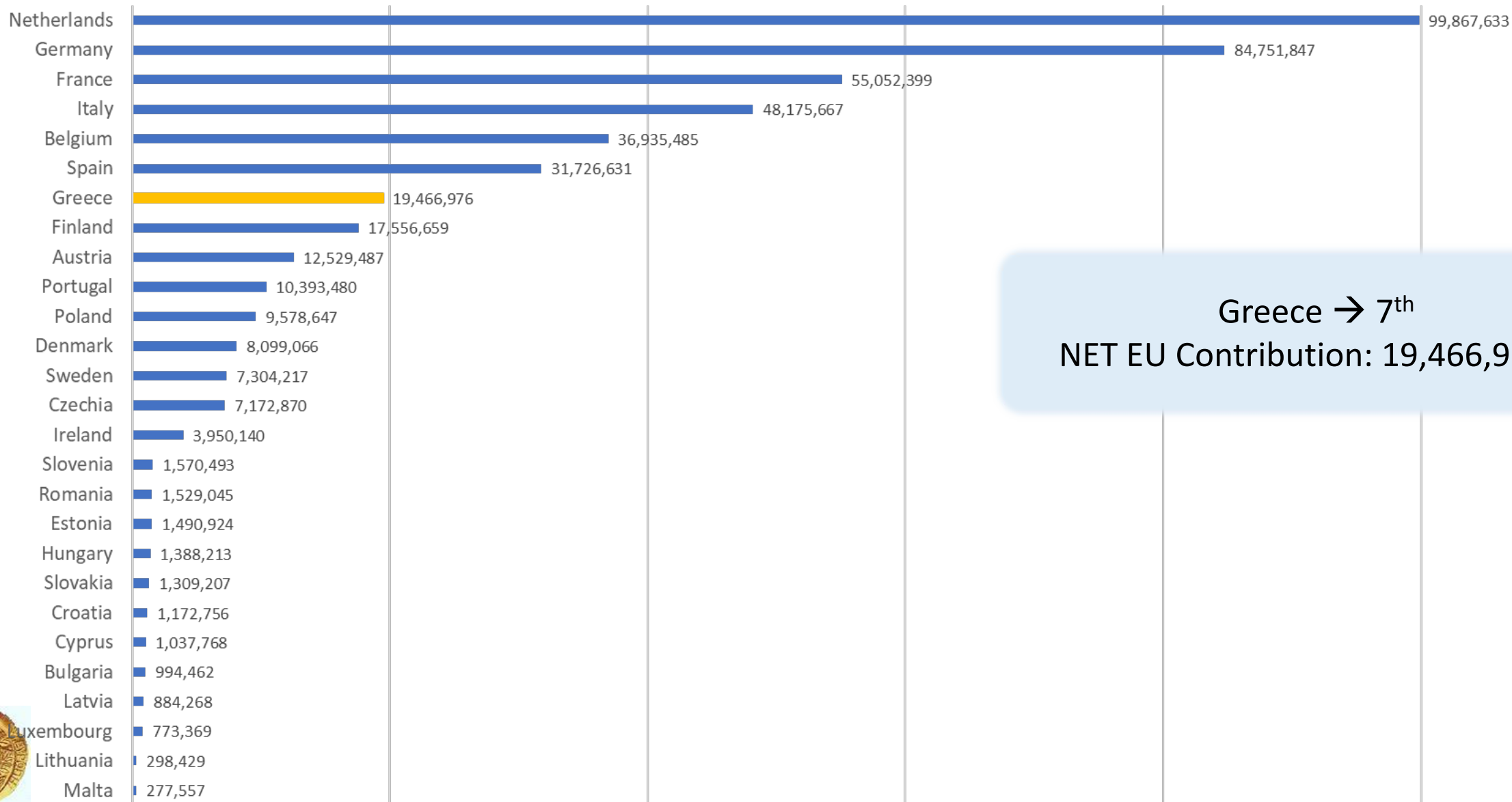


Greece → 7th
71 participations in 43 projects



Greek Participation in Research Infrastructure – funding

Κατάταξη της Ελλάδας στην ΕΕ 27 σε σχέση με τη χρηματοδότηση που προσελκύθηκε



Greece → 7th
NET EU Contribution: 19,466,976 €



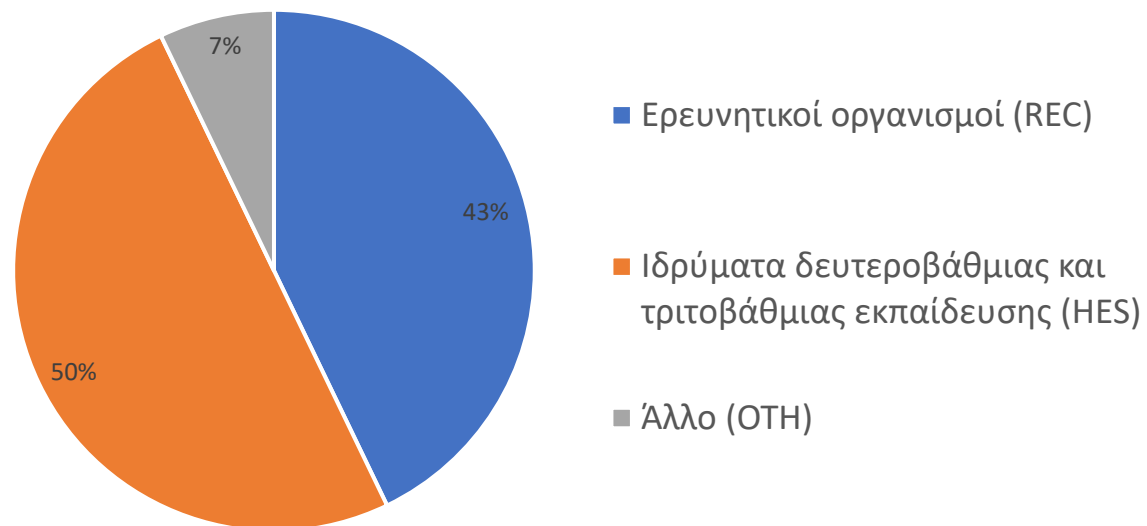
Developing, Consolidating and Optimising the European Research Infrastructures Landscape, Maintaining Global Leadership (INFRADEV)

Net EU Contribution	Total Cost	Signed Grants	Participation	Unique Participants
5,01M _{0,03%} HORIZON EUROPE	5,28M _{0,03%} HORIZON EUROPE	19 _{0,36%} HORIZON EUROPE	22 _{0,06%} HORIZON EUROPE	14 _{0,10%} HORIZON EUROPE

Top players

Ίδρυμα Τεχνολογίας και Έρευνας	3
Ερευνητικό Κέντρο "ΑΘΗΝΑ"	3
Αριστοτέλειο Πανεπιστήμιο Θεσσαλονίκης	3
Εθνικό Κέντρο Έρευνας Φυσικών Επιστημών «Δημόκριτος»	2
Ελληνικό Κέντρο Θαλάσσιων Ερευνών (ΕΛ.ΚΕ.Θ.Ε.)	2
Κέντρο Ερευνών Πανεπιστημίου Πειραιώς	1
Πανεπιστήμιο Θεσσαλίας	1
Μεσογειακό Αγρονομικό Ινστιτούτο Χανίων	1
Πανεπιστήμιο Πατρών	1
OPÉNAIRE AMKE	1

Συμμετοχή ανά τύπο οργανισμού



Συμμετοχές ως Συντονιστές: 2

Συμμετοχές ΜΜΕ: 1



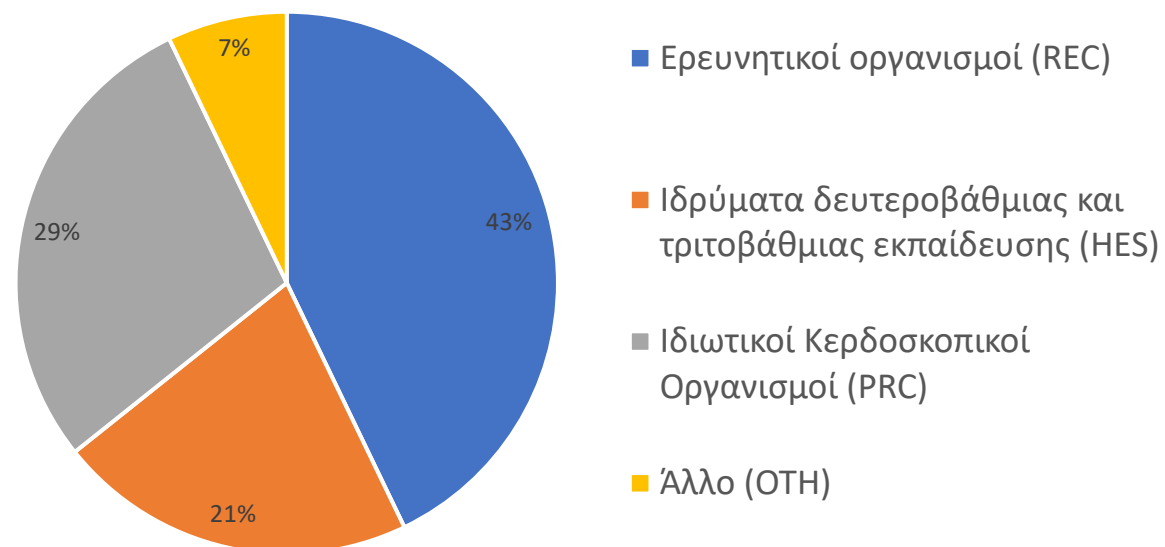
Enabling an Operational, Open and Fair EOSC Ecosystem (INFRAEOSC)

Net EU Contribution	Total Cost	Signed Grants	Participation	Unique Participants
8,9M _{0,06%} HORIZON EUROPE	10,27M _{0,06%} HORIZON EUROPE	9 _{0,17%} HORIZON EUROPE	29 _{0,08%} HORIZON EUROPE	14 _{0,10%} HORIZON EUROPE

Top players

OPENAIRE AMKE	5
Ερευνητικό Κέντρο "ΑΘΗΝΑ"	5
Εθνικό Δίκτυο Υποδομών Τεχνολογίας και Έρευνας	5
Εθνικό Κέντρο Έρευνας και Τεχνολογικής Ανάπτυξης	3
Ελληνικό Κέντρο Θαλάσσιων Ερευνών (ΕΛ.ΚΕ.Θ.Ε.)	2
Αριστοτέλειο Πανεπιστήμιο Θεσσαλονίκης	1
Πανεπιστήμιο Δυτικής Μακεδονίας	1
ΟΡΙΧ ΙΚΕ	1
Ερευνητικό Πανεπιστημιακό Ινστιτούτο Συστημάτων Επικοινωνιών & Υπολογιστών ΕΜΠ	1
Κυκλική Βελτιστοποίηση ΙΚΕ	1

Συμμετοχή ανά τύπο οργανισμού



Συμμετοχές ως Συντονιστές: 3

Συμμετοχές ΜΜΕ: 5

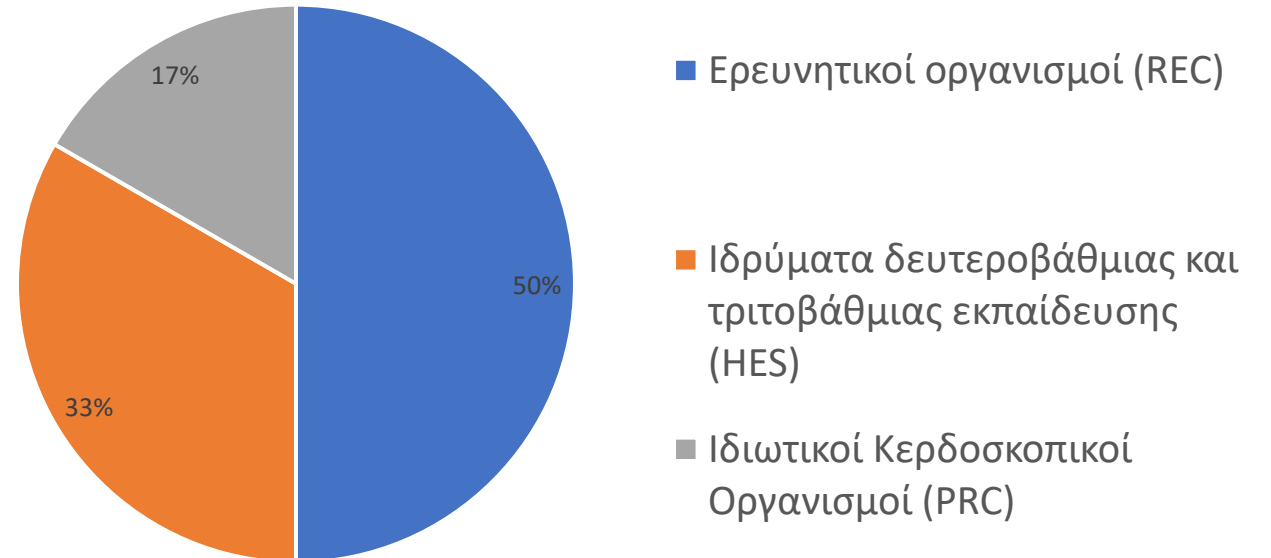


Research Infrastructure Services to Support Health Research, Accelerate the Green and Digital Transformation, and Advance Frontier Knowledge (INFRA SERV)



Top players	
Ελληνικό Κέντρο Θαλάσσιων Ερευνών (ΕΛ.ΚΕ.Θ.Ε.)	2
Πανεπιστήμιο Πατρών	1
Αριστοτέλειο Πανεπιστήμιο Θεσσαλονίκης	1
Εθνικό Αστεροσκοπείο Αθηνών	1
Ίδρυμα Τεχνολογίας και Έρευνας	1
Εθνικό Δίκτυο Υποδομών Τεχνολογίας και Έρευνας	1

Συμμετοχή ανά τύπο οργανισμού



Συμμετοχές ως Συντονιστές: 0

Συμμετοχές MME: 1



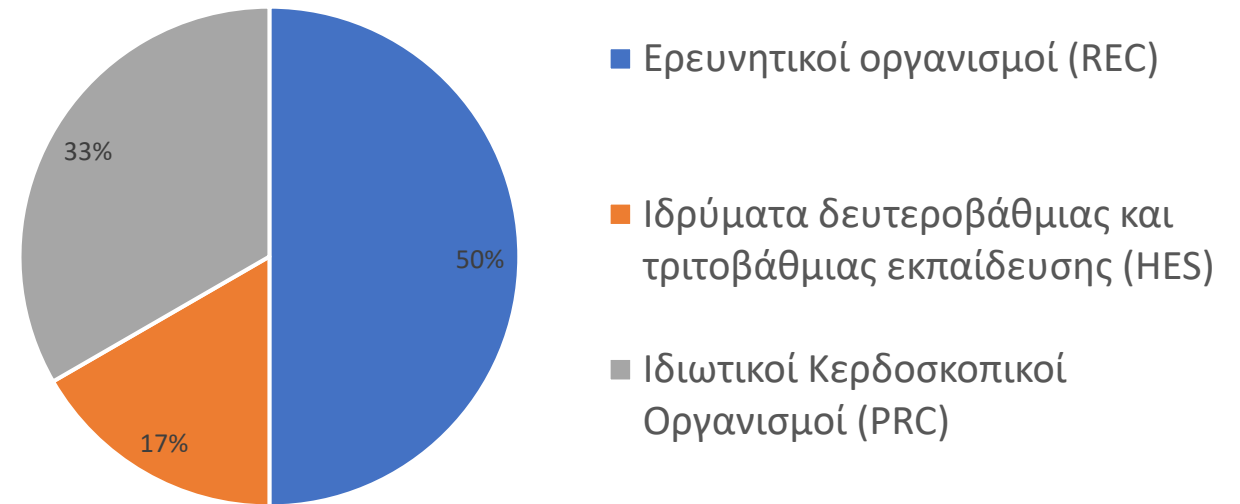
Next Generation of Scientific Instrumentation, Tools and Methods and Advanced Digital Solutions (INFRATECH)

Net EU Contribution	Total Cost	Signed Grants	Participation	Unique Participants
2,59M <small>0,02% HORIZON EUROPE</small>	2,69M <small>0,01% HORIZON EUROPE</small>	6 <small>0,11% HORIZON EUROPE</small>	8 <small>0,02% HORIZON EUROPE</small>	6 <small>0,04% HORIZON EUROPE</small>

Top players

Ερευνητικό Κέντρο "ΑΘΗΝΑ"	2
Ελληνικό Κέντρο Θαλάσσιων Ερευνών (ΕΛ.ΚΕ.Θ.Ε.)	2
Εθνικό Μετσόβιο Πολυτεχνείο	1
Ιδρυμα Τεχνολογίας και Έρευνας	1
Εθνικό Δίκτυο Υποδομών Τεχνολογίας και Έρευνας	1
SYMBIOLABS CIRCULAR INTELLIGENCE I.K.E.	1

Συμμετοχή ανά τύπο οργανισμού



Συμμετοχές ως Συντονιστές: 0

Συμμετοχές ΜΜΕ: 2



Network Connectivity in Research and Education - Enabling Collaboration Without Boundaries (INFRANET)

Net EU Contribution	Total Cost	Signed Grants	Participation	Unique Participants
19k _{0,00%} HORIZON EUROPE	23,75k _{0,00%} HORIZON EUROPE	1 _{0,02%} HORIZON EUROPE	1 _{0,00%} HORIZON EUROPE	1 _{0,01%} HORIZON EUROPE

Top players

Εθνικό Δίκτυο Υποδομών Τεχνολογίας και Έρευνας (ΜμΕ)	1
--	---

Συμμετοχές ως Συντονιστές: 0

Συμμετοχές ΜΜΕ: 1



COVID-19 Emergency Calls (INFRA-2021-EMERGENCY)

Net EU Contribution	Total Cost	Signed Grants	Participation	Unique Participants
107,4k _{0,00%} HORIZON EUROPE	107,4k _{0,00%} HORIZON EUROPE	2 _{0,04%} HORIZON EUROPE	3 _{0,01%} HORIZON EUROPE	3 _{0,02%} HORIZON EUROPE

Top players	
Εθνικό Κέντρο Κοινωνικών Ερευνών	1
Ίδρυμα Τεχνολογίας και Έρευνας	1
Ίδρυμα Ιατροβιολογικών Ερευνών Ακαδημίας Αθηνών	1

Τύπος οργανισμών: ερευνητικοί οργανισμοί
(100%)

Συμμετοχές ως Συντονιστές: 0

Συμμετοχές ΜΜΕ: 0



Conclusions on the Greek Participation in the Research Infrastructures Programme

- Most popular destinations for Greek Partners for the 2021-2022 Work Programme have been INFRADEV and INFRAEOSC
- Most popular keywords in projects with Greek participation have been: Ecosystems, Governance, Climatic changes, Software, Data protection.
- Greek Partners participated mostly in Research and Innovation actions – RIA (60%) and Coordination and Support Actions – CSA (40%).
- The Regions with greater participation have been Attica (66%), Central Macedonia (17%) and Crete (11,3%).
- Three Greek Partners as Coordinators in five projects in the 2021-2022 period (two from REC and one from HEI).

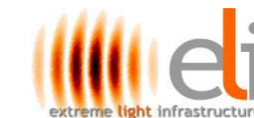


Participation of IESL-FORTH in the European Research Infrastructures Programme

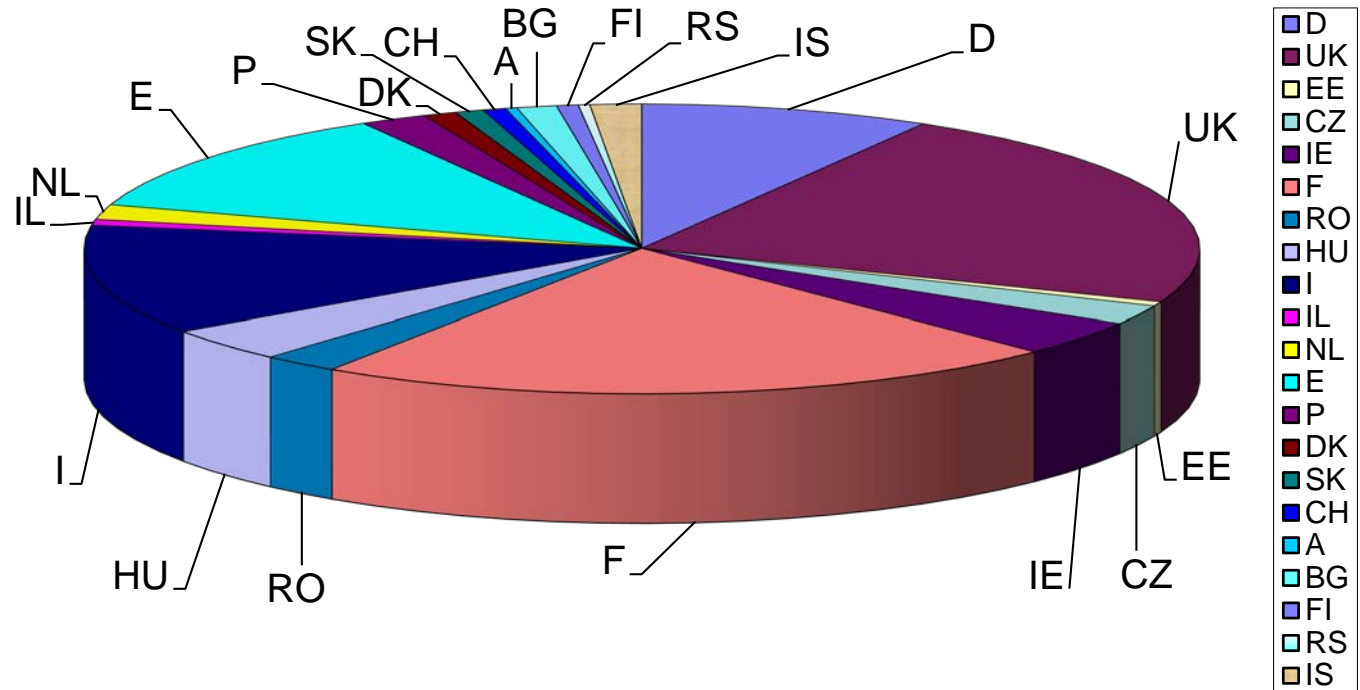
- 👉 Laserlab-Europe: European **Laser** Infrastructure
 - 📎 Member since 1990! – Renewed in 2019
- 👉 IPERION HS: Integrated Platform for the European Research Infrastructure ON **Heritage Science** – Renewed in 2019
- 👉 SSHOC: Social Sciences and **Humanities** Open Cloud – New in 2019
- 👉 EUSMI: European Infrastructure for Spectroscopy, Scattering and Imaging of **Soft Matter**
- 👉 NFFA-EUROPE: **Nanoscience** Foundries and Fine Analysis for Europe – Renewed in 2020
- 👉 ACTPHAST: Access Center for **Photonics Innovation** Solutions and Technology Support (for SMEs, for Researchers)
- 👉 PhotonHub Europe: **Photonics Digital** Innovation Hub – New in 2021
- 👉 European Strategy Forum on Research Infrastructures (ESFRI)
 - 📎 ELI (**Extreme Light** Infrastructure)
 - 📎 E-RIHS (European Research Infrastructure for **Heritage Science**) – Going to ERIC in 2022



IPERION **HS**



Laserlab-Europe: A European Laser Facility at FORTH/IESL Access provided during 1990-2021

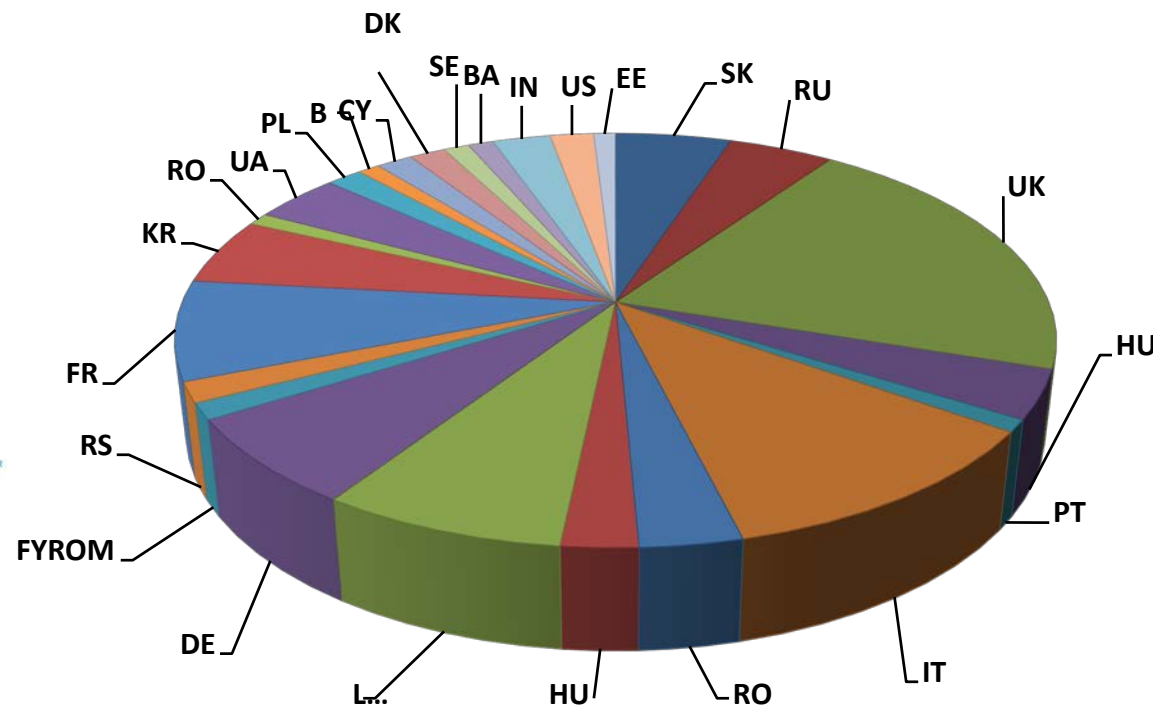
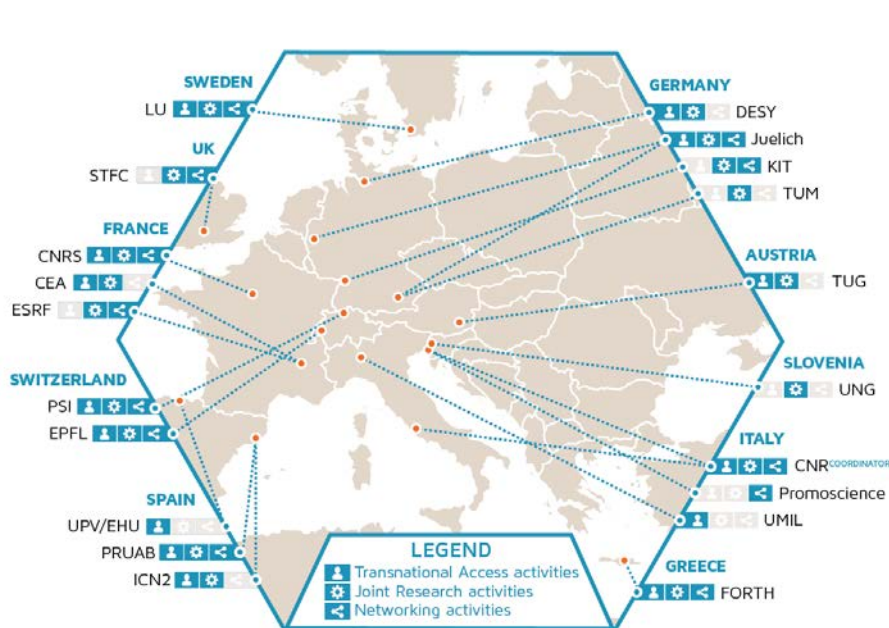


- 👉 33 laser infrastructures
- 👉 5 subcontractors
- 👉 9 associates
- 👉 22 European countries

- 👉 319 projects
- 👉 538 researchers from European Research Centers
- 👉 3668 days of access



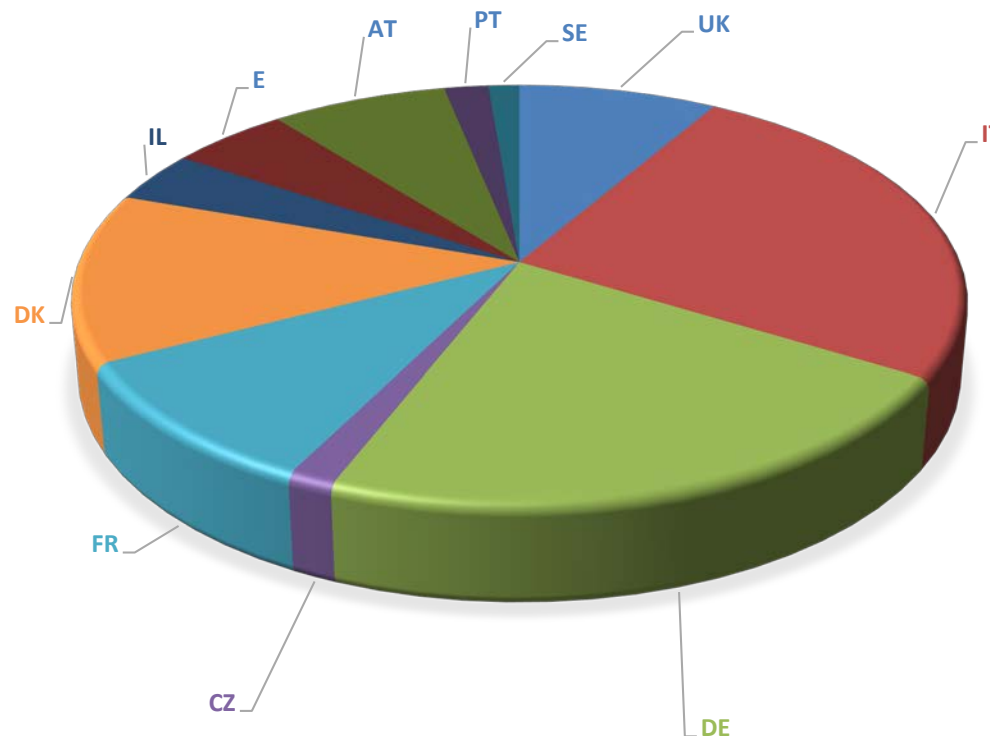
NFFA-EUROPE: Access provided during 2015-2021



- 👉 54 projects, 88 researchers from European Research Centers
- 👉 631 days of access



EUSMI: Access provided during 2011-2021



<https://eusmi-h2020.eu/>

- 👉 34 projects, 42 researchers from European Research Centers
- 👉 536 days of access



THANK YOU

